

**Downee**

**DEA**



**FAST**

**24**

**24V / up to 500kg**

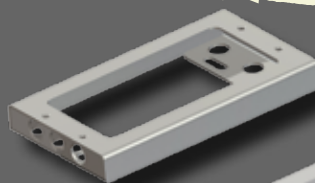
## POWER OPTIONS

- Power at the gate
- External Transformer
- Solar

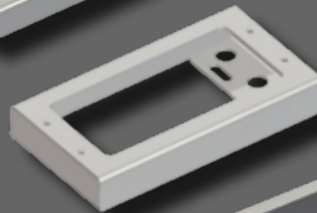
## ALSO AVAILABLE WITH

- Magnetic Limit Switch

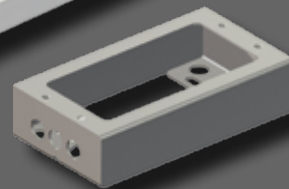
# 3 BASE OPTIONS



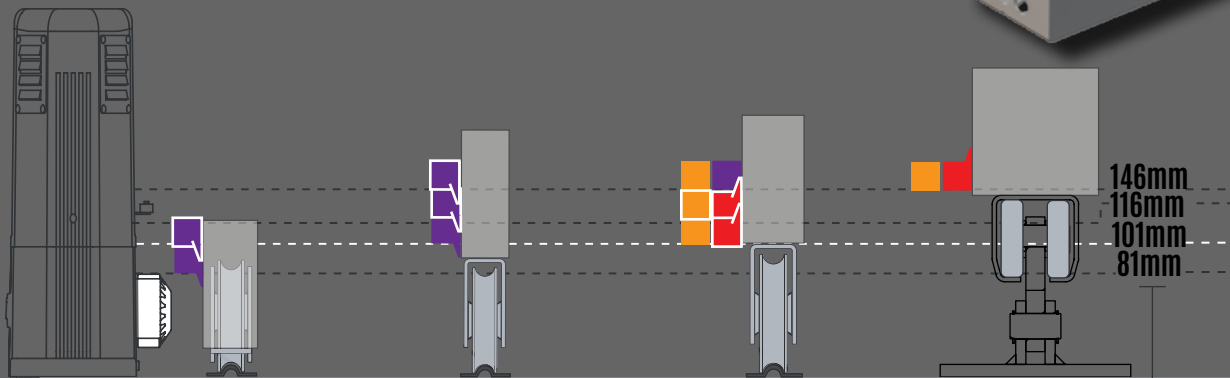
**20mm Base**  
LOLUXBASE-LOW  
SUPPLIED AS STANDARD



**35mm Base**  
AAC-FASTBASE



**65mm Base**  
LOLUXBASE-HI



**RECESSED WHEEL**  
90mm (300550)

**BOTTOM MOUNT WHEEL**  
80mm (327-80S)

**BOTTOM MOUNT WHEEL**  
100mm (328-100)

**CANTILEVER**  
Carriage Small

Steel Rack

Nylon Rack

Nylon Rack Up

## HARDWARE



See Pro Gate Hardware on our website and catalogue.

- Rack
- Track
- Cantilever Hardware

## ACCESSORIES



### Keypads

- Proximity keypads
- Wireless Keypads



### Remotes

- Add as many remotes you need



### Photocell options:

- Hard Wired
- Battery Operated
- Reflective

Check out our full range of Pro Gate Accessories on our website including

- Battery Back Up
- GSM Controller
- Loop Detector

## TECHNICAL

MOTOR		24V
Motor Voltage	V	24(DC)
Motor Power	W	80
Duty Cycle	%	50
Opening Per Hour	5m gate	22
Opening Speed	m/min	16
Thrust Max.	N	240
Manufacturers Rating	kg	500
Protection Degree	IP	X4 (44 for Mag Switch)
Dimensions (H-W-D)	mm	320h 240w 188d
Motor Weight	kg	12
Working Temperature	°C	-20° to 40°
Cog Height	mm	81

REMOTE		
Remote	4 Channel	Rolling Codes

CONTROL BOARD		
Control Board		NET24
Input Power	V	24(DC)



**WE BUILD CUSTOM SYSTEMS  
FOR ANY INSTALL.  
LET US KNOW WHAT YOU NEED.**

